



**DEVELOPMENT PLAN
SCHEME**
May 2016

CONTENTS

WHAT IS A DEVELOPMENT PLAN SCHEME?	2
WHAT IS A DEVELOPMENT PLAN?	3
CURRENT LOCAL PLANS IN EDINBURGH	4
LOCAL DEVELOPMENT PLAN	5
Purpose	5
Progress	5
Next Steps	6
PARTICIPATION STATEMENT	8
CONTACT	11

WHAT IS A DEVELOPMENT PLAN SCHEME?

This leaflet is a Development Plan Scheme. It sets out the programme for preparing Edinburgh’s first Local Development Plan. It includes:

- an explanation of what a Local Development Plan is;
- an update of progress to date in preparing the Local Development Plan;
- an updated programme for the next steps in preparing the Local Development Plan; and
- a Participation Statement which sets out when and how you can next get involved.

This is the Council’s tenth Development Plan Scheme. It replaces one published in May 2015.

WHAT IS A DEVELOPMENT PLAN?

The planning system has an impact on everyone. Government requires Councils to prepare development plans which are the basis for decision making on planning applications. They contain a strategy for the future development of an area and set out policies and proposals to guide future development and use of land.

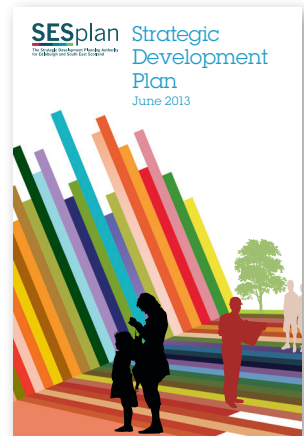
Decisions on how and where development will take place in Edinburgh are influenced by the following statutory documents:

The National Planning Framework: this sets out, at the national level, the Scottish Government's strategy for the country's spatial development, including schemes of national importance. The third NPF was published in June 2014.

A Strategic Development Plan: these are produced for Scotland's four largest city regions. They set out a long term (20 years or more) spatial planning strategy indicating in broad terms where future development will be located and what's required to deliver it. The Strategic Development Plan for South East Scotland was approved in June 2013. It was prepared by the Strategic Development Plan Authority for Edinburgh and South East Scotland (SESplan). The six councils which are members of SESplan are Edinburgh, East Lothian, Fife, Midlothian, Scottish Borders and West Lothian. Supplementary guidance setting out increased housing land requirements was adopted in autumn 2014. A replacement Strategic Development Plan is now in preparation.

A Local Development Plan: these are produced by the local planning authorities and set out more detailed policies and proposals to guide development. These plans are adopted by the planning authority and must accord with the approved Strategic Development Plan and seek to implement its requirements on a site-specific basis. When the Edinburgh Local Development Plan is adopted, it will replace two existing local plans.

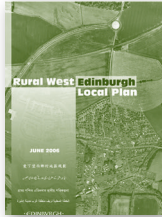
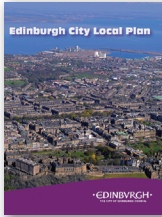
The Strategic Development Plan, together with the Local Development Plan and any associated supplementary guidance, form the statutory Development Plan.



CURRENT LOCAL PLANS IN EDINBURGH

The Edinburgh area is currently covered by two local plans:

- Edinburgh City Local Plan (ECLP), which was adopted in January 2010.
www.edinburgh.gov.uk/eclp
- Rural West Edinburgh Local Plan (RWELP), which was adopted in 2006 (alteration adopted in June 2011).
www.edinburgh.gov.uk/rwelpl



The area the two plans cover is set out in Figure 1.

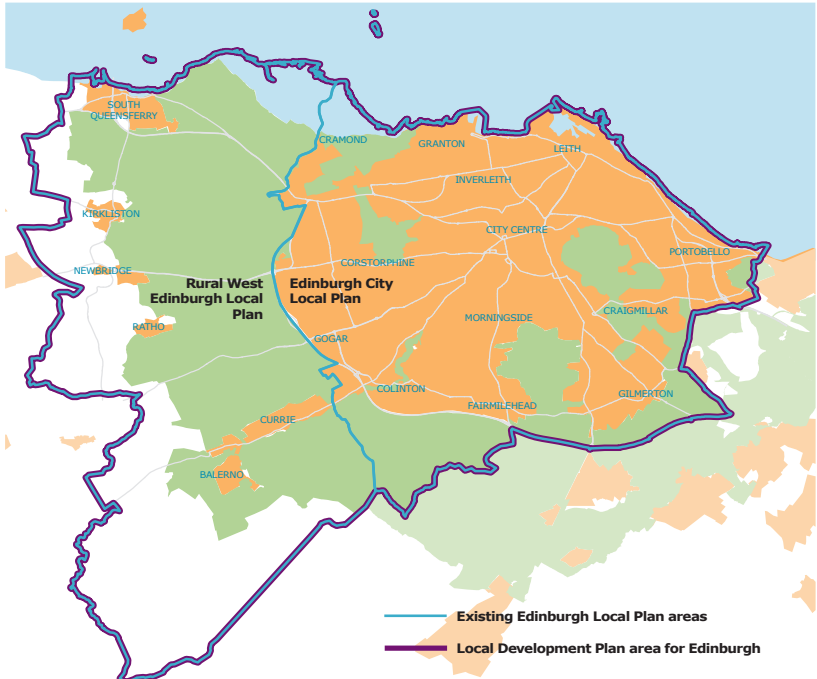


Figure 1

LOCAL DEVELOPMENT PLAN

Purpose

The purpose of the Local Development Plan is to:

- provide a clear basis for determining planning applications
- allocate land to meet the needs and targets set out in the Strategic Development Plan for the wider city region (the SESplan area).

Progress

Since the publication of the first Development Plan Scheme in 2009, preparation of the Local Development Plan has progressed. The Main Issues Report, accompanied by an Environmental Report and Monitoring Statement, was published in October 2011 to seek views on the policy and development options that could be included in the Local Development Plan.

At the Main Issues Report stage, we consulted a wide range of stakeholders - members of the public, Community Councils and groups, private businesses, key consultation agencies, neighbouring authorities and the Scottish Government. We used a number of different methods to make people aware of the Main Issues Report and to encourage them to get involved in the LDP process. This was the main consultation stage for the project and responses were published online in April 2012 (see www.edinburgh.gov.uk/localdevelopmentplan).

The Main Issues Report responses informed the preparation of the first Proposed Plan. This was approved in March 2013 and published in May for a six week period in which formal representations could be submitted.

Following preparation of the first Proposed LDP the Strategic Development Plan was approved by Scottish Ministers with changes. These included a larger housing



land requirement and greater scope for large housing sites outwith the main development areas. As a result SESplan prepared supplementary guidance setting out how much housing land needed to be provided by each Local Development Plan. The changes meant that the LDP needed to provide more housing land. Doing so changed the spatial strategy of the LDP which meant that a new Second Proposed Plan had to be prepared. The Second LDP, informed by responses received on the first Proposed LDP, was approved in June 2014 and published in August for a six week period where formal representations could be submitted. Representations were received from 2,500 individuals and organisations during this period and these were made available online.

Most representations sought a change to the Plan. These unresolved representations, a summary of the issues they raise and the Plan itself were submitted to Scottish Ministers at the end of May 2015 for examination. A reporter was appointed in June 2015 and the examination commenced with a target date at the end of February 2016.

The examination process consists largely of written submissions. Two hearing sessions were held in November 2015. Information about the examination can be found at the Scottish Government's Planning and Environmental Appeals Division website: www.dpea.scotland.gov.uk (case reference LDP-230-2).

Next Steps

The examination report is now expected in mid to late June 2016 (subject to confirmation from reporter).

Examination reports may make recommendations for modifications to the Plan. These recommendations are largely binding on the Council. The expected procedural steps are set out below.

LOCAL DEVELOPMENT PLAN (LDP)

The timetable for the process is set out in the following table.

STAGE	TIMETABLE FOR MAY 2016 DPS
MIR CONSULTATION	OCTOBER 2011 - JANUARY 2012
REPORT FIRST PROPOSED PLAN	MARCH 2013
PERIOD FOR REPRESENTATIONS	MAY – JUNE 2013
PUBLISHED REPRESENTATIONS AND NEW DPS	OCTOBER 2013
REPORT SECOND PROPOSED PLAN	JUNE 2014
PERIOD FOR REPRESENTATIONS	AUGUST – OCTOBER 2014
SUBMIT PLAN AND REPRESENTATIONS TO SCOTTISH MINISTERS	MAY 2015
EXAMINATION COMMENCES	JUNE 2015
EXAMINATION REPORT EXPECTED	MID/LATE JUNE 2016
CARRY OUT MODIFICATIONS AND ENVIRONMENTAL ASSESSMENT	JULY AND AUGUST 2016
REPORT PLAN AS MODIFIED	END AUGUST/EARLY SEPTEMBER 2016
PUBLISH MODIFIED PLAN AND NOTIFY ALL WHO MADE REPRESENTATIONS TO SECOND PROPOSED PLAN.	SEPTEMBER 2016
NOTIFY SCOTTISH MINISTERS FOR 28 DAY PERIOD	SEPTEMBER 2016
ADOPTION	OCTOBER/NOVEMBER 2016

PARTICIPATION STATEMENT

The following section sets out how we intend to engage with the public and other stakeholders in the next stage Local Development Plan process.

- Everyone who submitted responses to the Second Proposed LDP will be notified when the LDP is published, as modified, following the examination. This will be after the Plan as modified is approved by the Planning Committee, in September 2016.
- A copy of the Plan, as modified, will be available for inspection online and at all public libraries and the Council planning office at Waverley Court.
- Once formally adopted in October/November 2016, interested parties will be informed.
- It is intended to gather some feedback on the LDP project, as a whole, from interested parties. This is intended to inform the next LDP project.
- The timetable for the next LDP project will be set out in a future development plan scheme.

WANT TO GIVE US YOUR FEEDBACK?

We would like to know what you think of the Development Plan Scheme. You can complete this form online using the DPS Feedback Form link on www.edinburgh.gov.uk/localdevelopmentplan

	please circle	
Did you read the whole document?	yes	no
Did you think the document was easy to understand?	yes	no
Did you find the information useful?	yes	no
Do you think the consultation methods suggested will be useful?	yes	no
Please provide further comments on any of the above answers.		

If you would like to be kept informed of the progress on the project, please fill in your details and return to us.

Name

Address

.....

.....

Postcode

Tel

E-mail

The Development Plan Scheme will be formally updated at least annually and will be available on our website at www.edinburgh.gov.uk/localdevelopmentplan



FEEDBACK

Please return completed form (free of charge) to:

Freepost RSJS-UBAT-GHYL

Development Plan Scheme Survey

Mailpoint G3

City of Edinburgh Council Waverley Court

4 East Market Street

Edinburgh

EH8 8BG

Or download the DPS online at

www.edinburgh.gov.uk/localdevelopmentplan

CONTACT

Follow us on Twitter @plannedin
www.edinburgh.gov.uk/localdevelopmentplan

To find out more about community engagement in the LDP project:

Irene Beautyman

irene.beautyman@edinburgh.gov.uk

Add yourself to the LDP mailing list *(if you submitted comments at the Main Issues Report stage or representations to the first or Second Proposed Plan you will already be on our list)*

localdevelopmentplan@edinburgh.gov.uk

Questions about the content of current local plans or the LDP:

Ben Wilson, Team Manager

ben.wilson@edinburgh.gov.uk

or contact us by post

**Local Development Plan Project Team,
Waverley Court (G3),
4 East Market Street,
Edinburgh
EH3 8BG**



DEVELOPMENT PLAN SCHEME May 2016



HAPPY TO **TRANSLATE**

আনন্দের সঙ্গে অনুবাদ করব ترجمہ کے لئے حاضر

بسعندا توفیر الترجمة MOŻEMY PRZETŁUMACZYĆ 很樂意翻譯

You can get this document on tape, in Braille, large print and various computer formats if you ask us. Please contact Interpretation and Translation Service (ITS) on 0131 242 8181 and quote reference number 16 - 0059. ITS can also give information on community language translations.