

Community Partnership Planning – Moving Forward

**Andrew Field; Head of Community Empowerment and Engagement, CEC
Joan Parr; Service Director for Culture and Wellbeing**

Structure and context:

Culture and Wellbeing Team Objectives:

Meaningful access for city residents to cultural opportunities;

Edinburgh a welcoming city to cultural practitioners;

Edinburgh an environmentally responsible cultural city.



Community Engagement & Empowerment - The Vision

Our Vision is to help ensure that community empowerment and engagement are at the heart of Council service planning and delivery

Working with Community Councils, Neighbourhood Networks and Local Community Planning Partnerships.

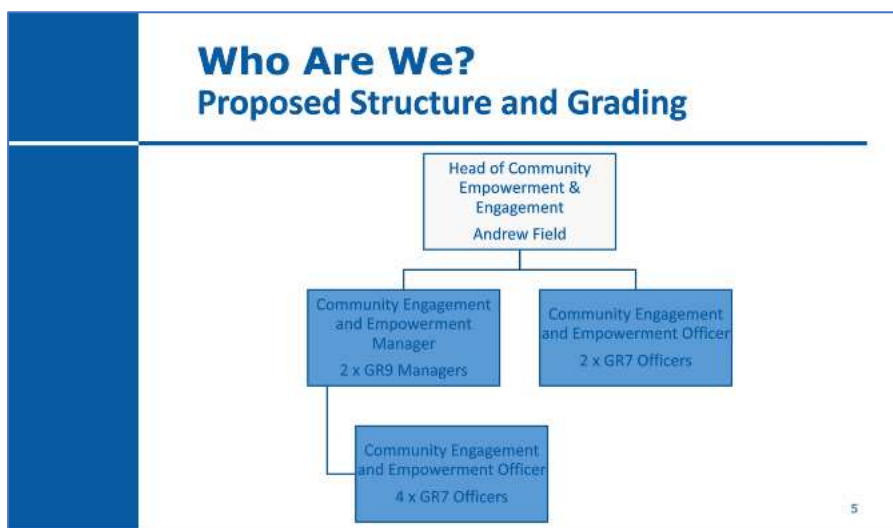
Target Q2 2023 launch:

What will we do?

- We will manage locally devolved Council Budgets, including the Community Grants Fund
- We will work with Council services to support them with empowerment and engagement activities via a new Board
- We will work with Neighbourhood Networks and Local Community Planning Partnerships on the delivery of their plans and priorities
- We will work with Community Councils in their developmental phase
- We will work with community and community run centre management committees on their futures through a 3 year SPF programme
- We will deliver a community centre strategy
- We will work with the Third Sector and community organisations on new partnering and delivery approaches

4

'Our job is about servicing the people of Edinburgh.'



Working to a CEC internal Community Empowerment Board, with the big 'service providers' around the table.

Staff Roles

- One Manager will lead on Community Planning - CGF, NN, LCPP & CC
- One Manager will lead on Community Centres & SPF
- All Officers have generic roles and will be involved in all service activities

6

	<h2 style="color: #0056b3; margin: 0;">Work With Community Councils</h2>
	<p>Developmental role in areas of Edinburgh where no Community Council is in place</p> <p>"Post-box" to other Council service areas</p> <p>Ensure there is clarity about who does what</p>
	<small>CEC</small>

Look to revive CCs in Wester Hailes and Craigmillar.
 Offer named 'go-to' contacts for community issues in Edinburgh; N, S, E & W.
 Act as 'post-box' for all other CEC services; 'hotline' contact.
 Revive Neighbourhood Networks (NN). Andrew Field to meet with each NN Chair.
 Offer direct NN support on the staff resourcing needed.

Get in touch with Andrew Field directly on specific issues and queries.
 andrew.field@edinburgh.gov.uk
 END

Transport Priorities for a Growing City
Understanding the new economy of transport
Cllr. Scott Arthur; Convenor, CEC Transport & Environment Committee

Context:
 37, 000 new homes planned for the city out to 2030.
 Edinburgh the most congested city in the UK.
 20-Minute Neighbourhoods a central platform to transport and environmental planning.
 Huge (chronic) funding pressure on councils; effectively a permanent backdrop.
 Threatens regional and city economic development.
 And then there are potholes – a scourge, but one not unique to Edinburgh.

<h3 style="margin: 0; color: #0056b3;">Transition</h3>
<ul style="list-style-type: none"> • Net Zero • Cutting Congestion • Cutting Inequality • Rebuilding Trust

New transport vision; new imperatives.
 The need for better engagement with residents / CCs / other groups openly acknowledged.

<h3 style="margin: 0; color: #0056b3;">Transport Uncertainty</h3>
<ul style="list-style-type: none"> • Post pandemic travel • City growth • Economic shocks • Attracting investment.

A city in recovery, but with transport infrastructure under big pressure.
How to cope with city expansion amidst current congestion?

RANK BY FILTER	WORLD RANK Y	CITY	TIME LOST PER YEAR	CONGESTION LEVEL 2021 Y	CHANGE FROM 2019 Y	CHANGE FROM 2020 Y
1	88	Edinburgh United Kingdom	80 hours	35%	+5%	+7%
2	88	London United Kingdom	75 hours	33%	+5%	+7%
3	88	Hull United Kingdom	73 hours	32%	+3%	+4%
4	84	Brighton and Hove United Kingdom	73 hours	32%	+5%	+4%
5	88	Bournemouth United Kingdom	64 hours	28%	+5%	+7%
6	98	Belfast United Kingdom	62 hours	27%	+3%	+7%
7	100	Bristol United Kingdom	59 hours	26%	+7%	+7%
8	103	Leicester United Kingdom	57 hours	25%	+7%	+7%
9	103	Liverpool United Kingdom	57 hours	25%	+3%	+7%
10	105	Manchester United Kingdom	55 hours	24%	+5%	+7%

Transport Challenges

- Getting the basics right or showing ambition.
- Getting Edinburgh ready for the future.
- Five dimensional party politics.
- Chronic underfunding.
- Change is painful

Anticipate c. £60m budget cut for city?

Road maintenance already c. £8m underfunded!

The Future: Transport as a spur to city economic development:

Big decisions fall to be made on planning for the Edinburgh's future;

Car use and car access; park and ride; roadways for all;

Low emission zone and controlled parking;

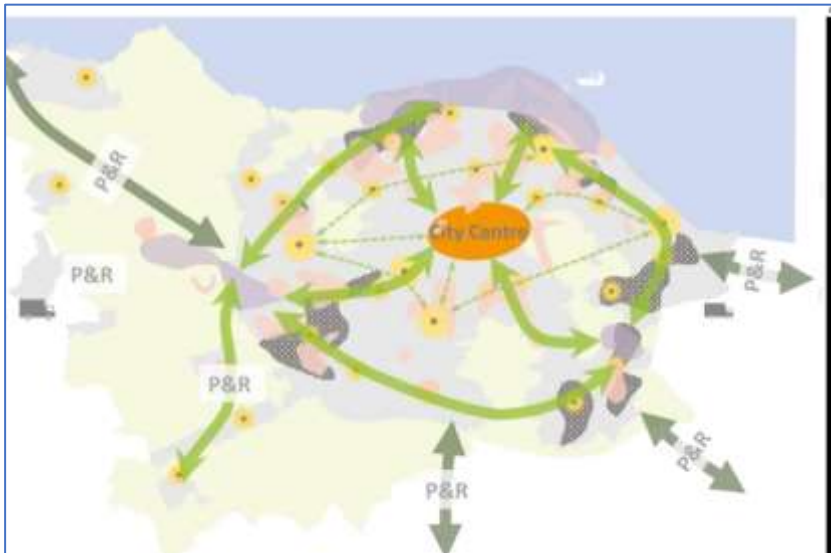
Integrated transport links; bus, tram and rail;

Tram network extensions;

Waterfront links to Fife;

Integration with regional transport strategy:

All in the context of an expanding city and net zero transition,





About the LEZ

- Introduced **31 May 2022**
- **City centre boundary**
- PCN fines for **most polluting vehicles only**
- 2 year grace period for all – enforcement from **1 June 2024**
- National exemptions only - **no local exemptions**
- Network challenges and **mitigations** (west, east)

14

Opportunities

1. Listing to local "experts"
2. Working with businesses
3. Cross boundary work.
4. Contributing to national progress.

The strategic challenges: Merge 'place-making', widespread mobility and the city's economic development.

END

Issues:

Potholes: Epidemic; council stand-by repair teams over-whelmed.

Road surface degradation:

High volume of utilityco roadworks;

Council struggling to keep check on 'reinstatement failure rates' but improving;

New micro-asphalt resurfacing techniques allows the road maintenance budget to 'go further', but the 'failure rate' is too high. (There are only two UK contractors for this type of 'extend road life / delay the end' road work.)

Big question marks over viability of current overburdened Traffic Regulation Order framework and procedures. (Cramond & Barnton CC)

(See Transport Scotland Consultation update 30 Sep 2022

<https://www.transport.gov.scot/publication/consultation-on-traffic-regulation-orders-public-consultation-analysis-report/>)

Edinburgh South suburban railway; what scope to revitalise?

West Edinburgh: pressured on traffic flow volumes, weak public transport provision, city expansion; 'lost integration opportunity' at Edinburgh Park Gateway. West Edinburgh residents have lost trust in the Council to grasp the issues. (Drumbrae CC, Corstorphine CC)

Leith hit by wave of disruptive traffic projects; strong feeling of despair at lack of consultation and poor coordination. (Leith Links CC)

(Budget cuts and 'de-prioritisation' have left Gateway with a lapsed planned link to Glasgow; hence the 'white elephant'. The Portobello – Seafield – South Leith rail line is retained for potential rail-freight. Courtesy – John Yellowlees, Murrayfield CC)

Change in city transport patterns; how to win 'hearts and minds' of residents? (Merchiston CC)

Watch for publication (27 January) of the CEC '**Public Transport Action Plan**'.

Join EACC for the 23 February meeting 'Transport 2', with Gavin Brown, CEC Head of Network Management.

END

KR